



**Parish of Wiverton in the Vale:**  
**One flock, One Shepherd, Six Pastures**  
**Notices 2<sup>nd</sup> and 9<sup>th</sup> April 2023**  
**Palm Sunday and Easter Sunday**

**DIARY FOR THE FORTNIGHT (correct at time of going to press)**

**SUNDAY 2<sup>nd</sup> April**

- 10.30am – All-Parish All Age Holy Communion** (St Andrew's, Langar)
- 4.00pm – Spring Serenade Concert** (St Giles', Cropwell Bishop)

**MONDAY 3<sup>rd</sup> April**

- 9.00am – All Parish Morning Prayer** (via Zoom)

**WEDNESDAY 5<sup>th</sup> April**

- 9.00am - 11.30am – Coffee, Cake and Chat with Bellringing Beginners,**  
St Giles', Cropwell Bishop

**THURSDAY 6<sup>th</sup> April Maundy Thursday**

- 7.00pm – HC with choir** (St John's, Colston Bassett)

**FRIDAY 7<sup>th</sup> April Good Friday**

- 11.30am Good Friday** pilgrimage starting at St Giles', Cropwell Bishop, via St John's, Colston Bassett (1.00pm) for lunch and finishing at St Andrew's, Langar (2.30pm) with hot cross buns

**SUNDAY 9<sup>th</sup> April Easter Sunday**

- 6.00am – Sunrise service** (St Mary's ruined church, Colston Bassett, followed by breakfast in the village hall)
- 10.30am – All-Parish Holy Communion** (Holy Trinity, Tythby)
- 10.30am – Family Holy Communion** (St Giles', Cropwell Bishop)

**MONDAY 10<sup>th</sup> April**

- 9.00am – All Parish Morning Prayer** (via Zoom)

**WEDNESDAY 12<sup>th</sup> April**

- 9.00am - 11.30am – Coffee, Cake and Chat with Bellringing Beginners,**  
St Giles', Cropwell Bishop

**FRIDAY 14<sup>th</sup> April**

- 9.00am – All Parish Morning Prayer** (via Zoom)
- 9.00am - 11.30am – Baby Club,** St Giles', Cropwell Bishop

**SUNDAY 16<sup>th</sup> April**

- 10.30am – All Parish Holy Communion** (St Giles', Cropwell Bishop)
- 10.30am – Morning Worship inc baptism** (St John's, Colston Bassett)

## READINGS

**Sunday 2<sup>nd</sup> April** Philippians 2.5-11 & Matthew 21.1-11

**Sunday 9<sup>th</sup> April** Colossians 3.1-4 & Matthew 28.1-10

## INFECTION GUIDANCE

Covid has settled down from being an overriding concern, to being one of many infections we need to be mindful of if we are to look after ourselves as well as protect others who are more vulnerable or caring for people who are particularly vulnerable. Therefore, we continue to recommend that you do not attend church services or events if you have symptoms or feel unwell, and maintain good hand hygiene. Sanitiser gel is available in churches.

## DATES FOR THE DIARY

**14<sup>th</sup> April – Colston Bassett Quiz Night**, 7pm in Colston Bassett Village Hall, see below

**17<sup>th</sup> April - APCM** meeting, 7.00pm St Andrew's Langar. If you would like to join the PCC and meet the criteria and are on the electoral roll please contact your church warden / representative or Jane Travis, [admin@wivertoninthevale.co.uk](mailto:admin@wivertoninthevale.co.uk) or call 07708 631623 for a nomination form.

## CURRENT APPEAL -PLEASE HELP!

**Our Current Appeal for Water Aid** is our **Lent Appeal**, so it will run through until Easter. We can't help all the 771 million people who don't have clean water close to home, but if our donations help even one family, what



a gift that would be! So, it's time to count the pennies and pounds that we've saved one way another through Lent, and maintain our Parish tradition of supporting this Charity. Donations may be made through the Parish website at [wivertoninthevale.co.uk/appeal](http://wivertoninthevale.co.uk/appeal) or in a marked envelope in church services. Thank you!

## EASTER CHICKS



East Bingham Deanery is collecting knitted chicks to give to children using food banks, and also those in our churches. Can you knit? They are collecting from the churches at Tollerton, Cropwell Bishop, Cotgrave, Plumtree, Kinoulton, Broughton Sulney and Hickling. Thank you to our nifty knitters who have already dropped some chicks into St Giles.

Email Portia for the pattern [portia.newling@southwell.anglican.org](mailto:portia.newling@southwell.anglican.org)

## SPRING SERENADE CONCERT



Join us for a concert of beautiful music from stage and screen, classical and jazz featuring Paul and Alistair.

2<sup>nd</sup> April at St Giles, Cropwell Bishop at 4.00pm, with drinks and cake from 3.30pm. Tickets available now from Hilary Tabron (0115 989 4836) and Ann Mansell (0115 989 2770) at £10, proceeds towards St Giles' improvements.

## COLSTON BASSETT QUIZ NIGHT

Come and pit your brains against your neighbours and friends and help to raise funds for the St Mary's Church repair appeal!

14<sup>th</sup> April at Colston Bassett Village Hall at 7.00pm, with prizes, a raffle and a ploughman's supper. Enter as a team of 4-6 or join a team on the night. Bring your own drink. Tickets at £10 including food available now from Jackie Fish (01949 81476) [jackieafish@hotmail.com](mailto:jackieafish@hotmail.com), Edward Hine (01949 20494) or Nick Perry (01949 81431) or buy tickets online:

[www.wivertoninthevale.co.uk/cbq2023](http://www.wivertoninthevale.co.uk/cbq2023)



## LETTERS From the Rectory and Beyond

### REFLECTIONS by Revd Canon Keith Turner

It was while at University that I first came across the Wycliffe Bible Translators. They have international expertise in linguistics as they write down languages that are only spoken. They then teach people to read and begin the process of Bible translation. It is quite extraordinary work and I have had the enormous privilege of having friends who have worked in Nigeria, Papua New Guinea and the Near East.

Recently, I came across a Wycliffe Bible Translators' article about a people group in Cameroon. There was a particular translation problem. I quote: "Almost every verb in the *Hdi* language has forms ending in *i*, *a*, and *u*, each with a different meaning. But when it came to the word for *love*, there was only *dvi* and *dva*. To use *dvu* would mean *loving* no matter what someone did. *Dvu* just did not exist".

The problem was translating *love* in '**God so loved the world**' (John 3 v 16). The Bible translator asked "Could God *dvu* people?. There was complete silence for three or four minutes. Tears flowed down the translator's face, and the other men began weeping too! You see, to use *dvu* would mean that God kept loving them whatever. Now very strangely the word was there but never used. Incredibly, "God had encoded the story of his unconditional love into their language". The number of believers grew from a few hundreds to several thousand!

What does all this have to do with Holy Week and Easter? Well, we have the word '*love*' of course but it does not translate very well the original Greek word (the verb relating to *agape*). It means '*sacrificial/ unconditional love*'. But this is what the cross and empty tomb is all about. Does understanding this have for us the same strength of reaction?

Bach's *B Minor Mass* ends with "*Dona nobis pacem*". It is utterly beautiful and powerful! Find it on Youtube and listen to it. "Grant us peace"! Isn't that what we need – this crazy mixed up world and you and me? We shall move from Palm Sunday to Easter Day via Maundy Thursday and Good Friday. It is an awesome journey. We stand before the cross and peer into an empty tomb. The well-known spiritual challenges us personally with these words: "*Were you there when they crucified my Lord?*" ... "*Were you there when God raised him from the dead?*"

## PRAYERS

*Oh, to see my name written in the wounds,  
for through Your suffering I am free.  
Death is crushed to death, life is mine to love,  
won through selfless love.*

*From 'The Power of the Cross' by Keith Getty & Stuart Townend*

**Lord God help us this Holy Week and Easter  
to grasp afresh your love for us in Christ.**

## ECO CHURCH

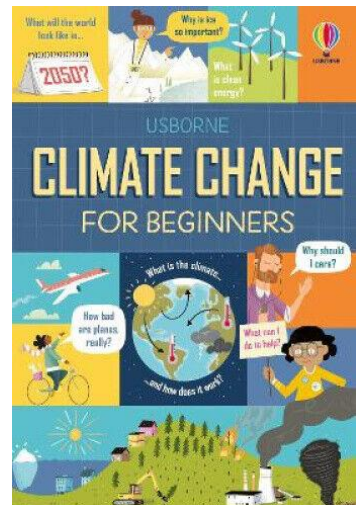
Spring has sprung in our churchyards which are full of beautiful primroses, violets and daffodils. Thanks to Alex and Tony nest boxes are up in the churchyard in St Giles and an area has been marked out for wild flowers. Photos of Alex making some of the bird boxes have also appeared on both the Southwell and Nottingham Diocese website and also on their social media feeds.

All our churches submitted applications to Eco Church and have now received their Bronze Awards - congratulations!



After a very successful trial last year keep an eye out in June / July for moth mornings again in several of our churchyards, weather permitting of course. It's an early start but exciting and fascinating to see what has been found and a cup of tea or coffee and a pastry feel like a reward for the early rise.

More initiatives will follow soon and please remember that we should all look at possibly trying to reduce our personal carbon footprint and the Climate Crisis books circulating in all our churches gives some good tips! The book encourages us to walk to church [and other places!] if possible or cycle and if you do need to drive can you give a lift to anyone? In Genesis God made mankind stewards of the earth and so we need to set a good example.



## CORONATION CELEBRATION SERVICE



We will be holding an All-Age, All-Parish Coronation Celebration Service at St Andrew's, Langar on Sunday 7<sup>th</sup> May at 10.30am. We even hope to have some special Coronation cake with our refreshments after the service. We do hope you can join us.

As the King and Queen Consort prepare to solemnise the promises and commitments they make to the nations and people they represent, the Church will begin 28 days of prayer and spiritual preparation alongside the King – praying with and for the King from Easter Sunday to the Coronation (Sunday 9 April – Saturday 6 May). Each church has been given a copy of the Book of Prayers, so if you are in church please take a look and pray.

## RE-ORDERING UPDATE FOR ST GILES', CROPWELL BISHOP

St Giles' Church is expected to be closed for 3 – 4 months from 24<sup>th</sup> April for re-ordering work at the back of the church. We have just heard that we've been granted permission to use the Methodist Chapel for services and choir practices through this time, and the adjacent Schoolroom for Coffee, Cake and Chat and for Baby Club, so there will be no interruption in local provision.

The expected work at St Giles' might come as a surprise to some of you, so you might be interested to hear some background. Six years ago we launched two mid-week social/pastoral sessions, taking advantage of the newly opened facilities in the tower, which brought a servery and W.C. However, we realised that the space to gather in church was limited, not just for those meetings, but for times after services when we had a chance to catch up with one another and get to know new worshippers. Further changes were needed! A proposal was developed to bring improvements, with greater space and flexibility. To say that bringing this to a point of readiness-to-proceed has been a challenge is an understatement! Eventually last summer we were granted the official permission to carry out the work, and funds from generous donations and an unexpected legacy have enabled us to get to the starting line. Thanks be to God!



## LIFE EVENTS

As a Parish we are delighted to be holding baptisms, weddings, blessings and renewal of vows. If you know of anyone who would like to hold one of these important Life Events, please do ask them to be in touch with Jane Travis, our Parish Administrator,  
[admin@wivertoninthevale.co.uk](mailto:admin@wivertoninthevale.co.uk).



## KEY CONTACTS

*The parish is now in interregnum, please address enquires to the Parish Administrator*

**Parish Administrator:** Jane Travis

phone: 07708 631 623 email: [admin@wivertoninthevale.co.uk](mailto:admin@wivertoninthevale.co.uk)

Working hours: 10am-2pm Tuesday & Thursday

**Pastoral Care Coordinator:** Hilary Tabron RLM

phone: 0115 9894836 email: [hilary.tabron@wivertoninthevale.co.uk](mailto:hilary.tabron@wivertoninthevale.co.uk)

**Parish Treasurer:** Phil Stephenson:

phone: 07790 036573 email: [treasurer@wivertoninthevale.co.uk](mailto:treasurer@wivertoninthevale.co.uk)

address: 10 Kinoulton Road, Cropwell Bishop, NG12 3BD

*Any concerns regarding a safeguarding issue should be directed to:*

**Parish Safeguarding Officer:** Rosie Dulwich

phone: 07786 961399 email: [rosie.dulwich@wivertoninthevale.co.uk](mailto:rosie.dulwich@wivertoninthevale.co.uk)

**Further information and contact details can be found on the parish website at [www.wivertoninthevale.co.uk/whos-who](http://www.wivertoninthevale.co.uk/whos-who)**

**Copy deadline for items to be included in the next two weeks' Notice Sheet:  
Wednesday 12<sup>th</sup> April 2023, to the Parish Administrator.**

## KEEPING IN TOUCH; STAYING INFORMED



These **notices** are posted week by week on the Parish website: [www.wivertoninthevale.co.uk](http://www.wivertoninthevale.co.uk)

To receive a copy of these notices by email every Saturday, please subscribe to the website notification service at:

[www.wivertoninthevale.co.uk/subscribe](http://www.wivertoninthevale.co.uk/subscribe)

## EASTER IN WIVERTON IN THE VALE

Please join us at some of our Easter services

### PALM SUNDAY

**2<sup>nd</sup> April** 10.30am All Age Holy Communion St Andrew's, Langar

### MAUNDY THURSDAY

**6<sup>th</sup> April** 7.00pm Holy Communion St John's, Colston Bassett

### GOOD FRIDAY PILGRIMAGE

**7<sup>th</sup> April**

11.30am St Giles', Cropwell Bishop

1.00pm St John's, Colston Bassett

2.30pm St Andrew's, Langar followed by tea and hot cross buns

### EASTER SUNDAY

**9<sup>th</sup> April**

6.00am Sunrise Service, St Mary's, Colston Bassett followed by breakfast in the Village Hall  
10.30am Holy Communion, Holy Trinity, Tythby  
10.30am Family Communion, St Giles', Cropwell Bishop

